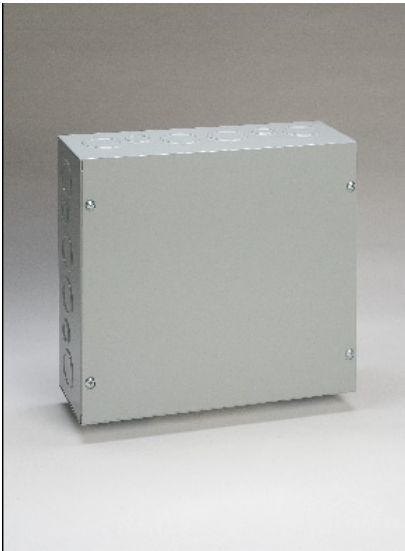


TYPE 1 SCREW COVER ENCLOSURES

1-7

TYPE 1 ENCLOSURES



Industry Standards
UL 508A, Type 1
NEMA Type 1



UL File E235575

Application:

Designed for use as a junction box and pull box in general indoor applications.

Construction:

- Steel fabricated enclosure and cover
- Mounting holes supplied on back of enclosure.
- Various sizes of knockouts are supplied on all four sides of the enclosure (see drawing for knockout pattern).
- Cover design allows for removal without fully removing screws.
- Cover secured with plated steel screws.

Finish:

- ANSI 61 gray powder coating inside and out over phosphatized surfaces.

Options:

- Custom sizes and colors available. Please call for details.

Enclosure Catalog Number	Enclosure Size H x W x D	Body/Door Steel Gauge
SC-040404	4.00" x 4.00" x 4.00"	16/16
SC-060604	6.00" x 6.00" x 4.00"	16/16
SC-080804	8.00" x 8.00" x 4.00"	16/16
SC-101004	10.00" x 10.00" x 4.00"	16/16
SC-121204	12.00" x 12.00" x 4.00"	16/16
SC-060606	6.00" x 6.00" x 6.00"	16/16
SC-080806	8.00" x 8.00" x 6.00"	16/16
SC-101006	10.00" x 10.00" x 6.00"	16/16
SC-121206	12.00" x 12.00" x 6.00"	16/16

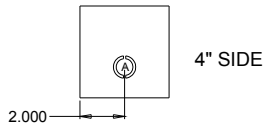
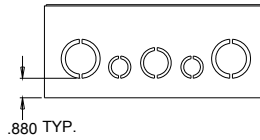
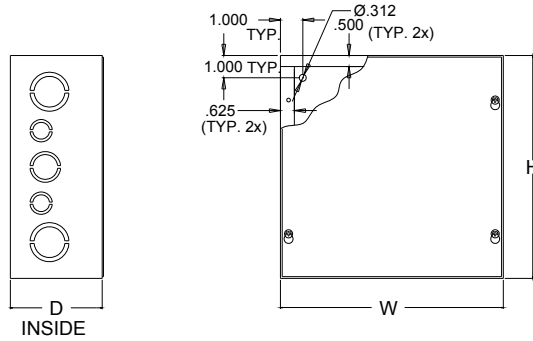


211 INDUSTRIAL COURT
WABASHA, MN 55981

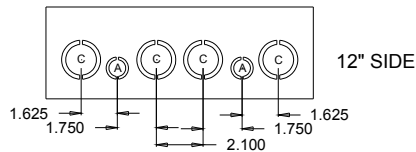
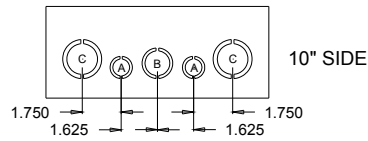
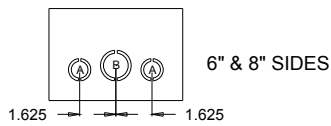
Phone: (651) 565-3395
Fax: (651) 565-2787
E-mail: info@thomasindustriesinc.com
www.thomasindustriesinc.com

*DATA SUBJECT TO CHANGE WITHOUT NOTICE

TYPE 1 SCREW COVER ENCLOSURES



KNOCKOUT SIZE CHART (CONDUIT SIZE)	
A	1/2" - 3/4"
B	3/4" - 1"
C	1" - 1-1/4"



211 INDUSTRIAL COURT
WABASHA, MN 55981

Phone: (651) 565-3395
 Fax: (651) 565-2787
 E-mail: info@thomasindustriesinc.com
www.thomasindustriesinc.com