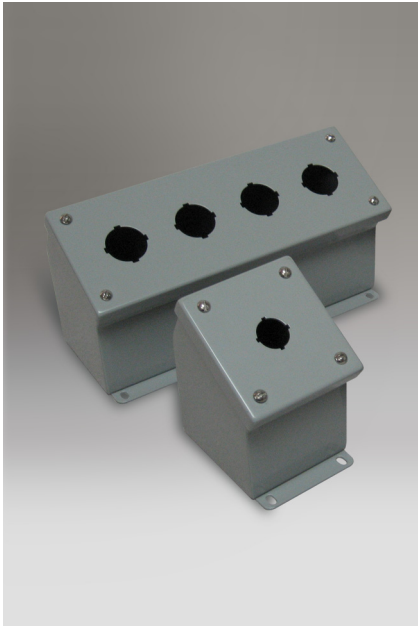


TYPE 12 SLOPED FRONT PUSHBUTTON ENCLOSURES



Industry Standards
 UL 508A, Type 2, 12, 13
 NEMA Type 2, 12, 13

Application:

Designed to hold 30.5mm or 22.5mm oil tight pushbuttons, pilot lights, and switches where a slanted control surface is desirable.

Construction:

- Steel fabricated covers and enclosures.
- Smooth, continuously welded seams.
- Grounding provisions provided.
- Cover screws threaded into sealed wells.
- Covers sealed with closed cell, oil resistant gasket.
- 4-way pushbutton holes accept all brands of oil tight pushbuttons, pilot lights, and switches.

Finish:

- ANSI 61 gray powder coating inside and out over phosphatized surfaces.

Options:

- Custom sizes and colors available. Please call for details.

Enclosure Catalog Number	Enclosure Size H x W x D	Body/Door Steel Gauge	Number of Pushbuttons/Size	Y	Z
N12SF1PB-22	4.00" x 4.00" x 5.00"	14/14	1/22.5 mm	4.000"	2.375"
N12SF1PB-30	4.00" x 4.00" x 5.00"	14/14	1/30.5 mm	4.000"	2.375"
N12SF2PB-22	6.00" x 4.00" x 5.00"	14/14	2/22.5 mm	4.000"	4.625"
N12SF2PB-30	6.00" x 4.00" x 5.00"	14/14	2/30.5 mm	4.000"	4.625"
N12SF3PB-22	8.00" x 4.00" x 5.00"	14/14	3/22.5 mm	4.000"	6.875"
N12SF3PB-30	8.00" x 4.00" x 5.00"	14/14	3/30.5 mm	4.000"	6.875"
N12SF4PB-22	10.00" x 4.00" x 5.00"	14/14	4/22.5 mm	4.000"	9.125"
N12SF4PB-30	10.00" x 4.00" x 5.00"	14/14	4/30.5 mm	4.000"	9.125"

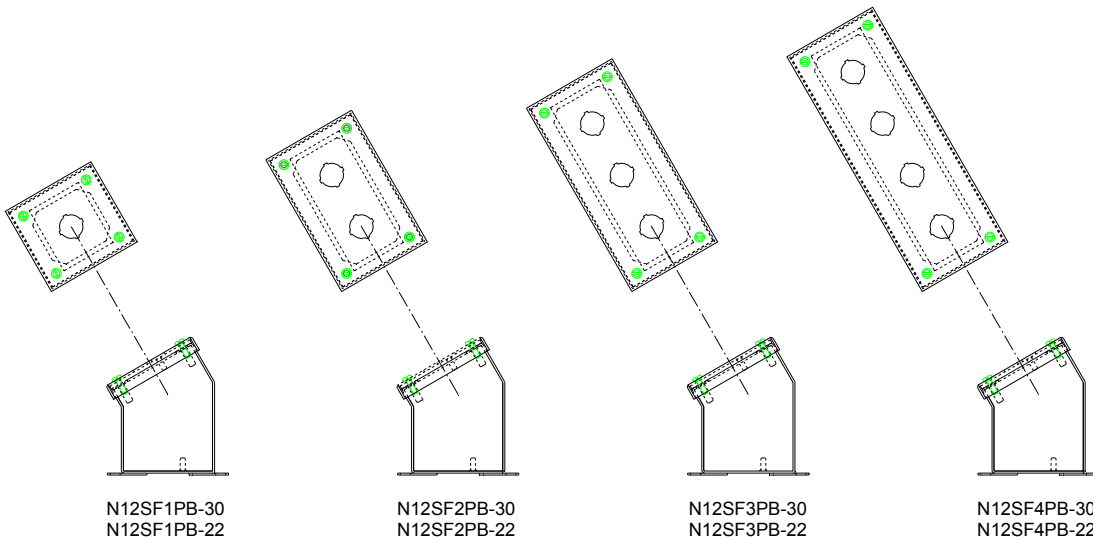
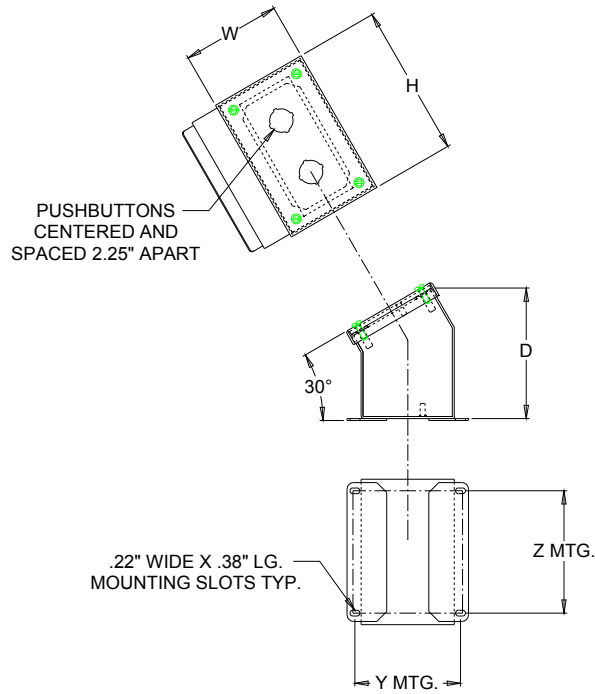


211 INDUSTRIAL COURT
 WABASHA, MN 55981

Phone: (651) 565-3395
 Fax: (651) 565-2787
 E-mail: info@thomasindustriesinc.com
www.thomasindustriesinc.com

*DATA SUBJECT TO CHANGE WITHOUT NOTICE

TYPE 12 SLOPED FRONT PUSHBUTTON ENCLOSURES



211 INDUSTRIAL COURT
WABASHA, MN 55981

Phone: (651) 565-3395
 Fax: (651) 565-2787
 E-mail: info@thomasindustriesinc.com
www.thomasindustriesinc.com

*DATA SUBJECT TO CHANGE WITHOUT NOTICE