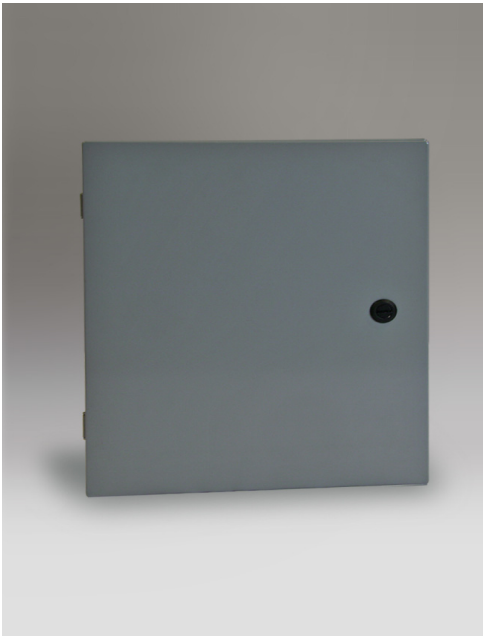


TYPE 4 FLUSH DOOR ENCLOSURES

4-5



Industry Standards
UL 508A, Type 4, 12, 13
NEMA Type 4, 12, 13



UL File E235575

TYPE 4 ENCLOSURES

Application:

Designed to enclose electrical or electronic equipment in harsh, dirty environments. Provides protection in areas where dust, dirt, oil, water or other contaminants are a concern. Impressive styling makes the enclosure a suitable addition to any high-tech equipment installation.

Construction:

- Steel fabricated doors and enclosures.
- Smooth, continuously welded seams without knockouts, cutouts, or holes.
- Formed lip on enclosure to keep out liquids and contaminants.
- Door is secured with ¼ turn slotted latch.
- Door is sealed with closed cell, oil resistant gasket.
- Hidden hinges for clean, aesthetic appearance.
- Stainless steel hinge pins.
- Mounting holes in back of body for direct mounting or mounting of optional wall-mounting bracket kit.
- Collar studs are provided for mounting optional inner panels.
- Grounding provisions are provided.

Finish:

- ANSI 61 gray powder coating inside and out over phosphatized surfaces. Optional panels are powder coated white.

Accessories:

- Back panels (see reference chart, pg. 6-4).
- Wall-mounting bracket kit (see reference chart, pg. 7-3).
- Print pockets (see reference chart, pg. 7-2).

Options:

- Custom sizes and colors available. Please call for details.



211 INDUSTRIAL COURT
WABASHA, MN 55981

Phone: (651) 565-3395
Fax: (651) 565-2787
E-mail: info@thomasindustriesinc.com
www.thomasindustriesinc.com

*DATA SUBJECT TO CHANGE WITHOUT NOTICE

TYPE 4 FLUSH DOOR ENCLOSURES

| Enclosure Catalog Number | Enclosure Size H x W x D | Body/Door Steel Gauge | X | Qtr.Turn Latch Qty. | 3 Pt. Latch Qty. | Back Panel Catalog Number | Back Panel Size A x B | Back Panel Gauge |
|--------------------------|--------------------------|-----------------------|---------|---------------------|------------------|---------------------------|-----------------------|------------------|
| N4FD-121206 | 12.00" x 12.00" x 6.00" | 16/16 | 6.075" | 1 | | PSFD-1212 | 9.45" x 9.45" | 14 |
| N4FD-161206 | 16.00" x 12.00" x 6.00" | 16/16 | 6.075" | 1 | | PSFD-1612 | 13.45" x 9.45" | 14 |
| N4FD-161208 | 16.00" x 12.00" x 8.00" | 16/16 | 8.075" | 1 | | PSFD-1612 | 13.45" x 9.45" | 14 |
| N4FD-161606 | 16.00" x 16.00" x 6.00" | 16/16 | 6.075" | 1 | | PSFD-1616 | 13.45" x 13.45" | 12 |
| N4FD-161608 | 16.00" x 16.00" x 8.00" | 16/16 | 8.075" | 1 | | PSFD-1616 | 13.45" x 13.45" | 12 |
| N4FD-162006 | 16.00" x 20.00" x 6.00" | 16/16 | 6.075" | 3 | | PSN-2016 | 17.00" x 13.00" | 12 |
| N4FD-162008 | 16.00" x 20.00" x 8.00" | 16/16 | 8.075" | 3 | | PSN-2016 | 17.00" x 13.00" | 12 |
| N4FD-201608 | 20.00" x 16.00" x 8.00" | 16/16 | 8.075" | 1 | | PSN-2016 | 17.00" x 13.00" | 12 |
| N4FD-202008 | 20.00" x 20.00" x 8.00" | 16/16 | 8.075" | 3 | | PSN-2020 | 17.00" x 17.00" | 12 |
| N4FD-202012 | 20.00" x 20.00" x 12.00" | 16/16 | 12.075" | 3 | | PSN-2020 | 17.00" x 17.00" | 12 |
| N4FD-202408 | 20.00" x 24.00" x 8.00" | 16/16 | 8.075" | 3 | | PSN-2420 | 21.00" x 17.00" | 12 |
| N4FD-242008 | 24.00" x 20.00" x 8.00" | 16/16 | 8.075" | 4 | | PSN-2420 | 21.00" x 17.00" | 12 |
| N4FD-242012 | 24.00" x 20.00" x 12.00" | 16/16 | 12.075" | 4 | | PSN-2420 | 21.00" x 17.00" | 12 |
| N4FD-242408 | 24.00" x 24.00" x 8.00" | 16/14 | 8.075" | 4 | | PSN-2424 | 21.00" x 21.00" | 12 |
| N4FD-242412 | 24.00" x 24.00" x 12.00" | 16/14 | 12.075" | 4 | | PSN-2424 | 21.00" x 21.00" | 12 |
| N4FD-243008 | 24.00" x 30.00" x 8.00" | 16/14 | 8.075" | 4 | | PSN-3024 | 27.00" x 21.00" | 12 |
| N4FD-302408 | 30.00" x 24.00" x 8.00" | 16/14 | 8.075" | 4 | | PSN-3024 | 27.00" x 21.00" | 12 |
| N4FD-302410 | 30.00" x 24.00" x 10.00" | 16/14 | 10.075" | 4 | | PSN-3024 | 27.00" x 21.00" | 12 |
| N4FD-302412 | 30.00" x 24.00" x 12.00" | 16/14 | 12.075" | 4 | | PSN-3024 | 27.00" x 21.00" | 12 |
| N4FD-362412 | 36.00" x 24.00" x 12.00" | 16/14 | 12.075" | 4 | | PSN-3624 | 33.00" x 21.00" | 12 |
| N4FD-363010 | 36.00" x 30.00" x 10.00" | 14/14 | 10.075" | 4 | | PSN-3630 | 33.00" x 27.00" | 12 |
| N4FD-363012 | 36.00" x 30.00" x 12.00" | 14/14 | 12.075" | 4 | | PSN-3630 | 33.00" x 27.00" | 12 |
| N4FD-423612 | 42.00" x 36.00" x 12.00" | 14/14 | 12.075" | 2 | 1 | PSN-4236 | 39.00" x 33.00" | 12 |
| N4FD-483612 | 48.00" x 36.00" x 12.00" | 14/14 | 12.075" | 2 | 1 | PSN-4836 | 45.00" x 33.00" | 12 |
| N4FD-483616 | 48.00" x 36.00" x 16.00" | 14/14 | 16.075" | 2 | 1 | PSN-4836 | 45.00" x 33.00" | 12 |
| N4FD-603612 | 60.00" x 36.00" x 12.00" | 14/14 | 12.075" | 2 | 1 | PSN-6036 | 57.00" x 33.00" | 12 |
| N4FD-603616 | 60.00" x 36.00" x 16.00" | 14/14 | 16.075" | 2 | 1 | PSN-6036 | 57.00" x 33.00" | 12 |

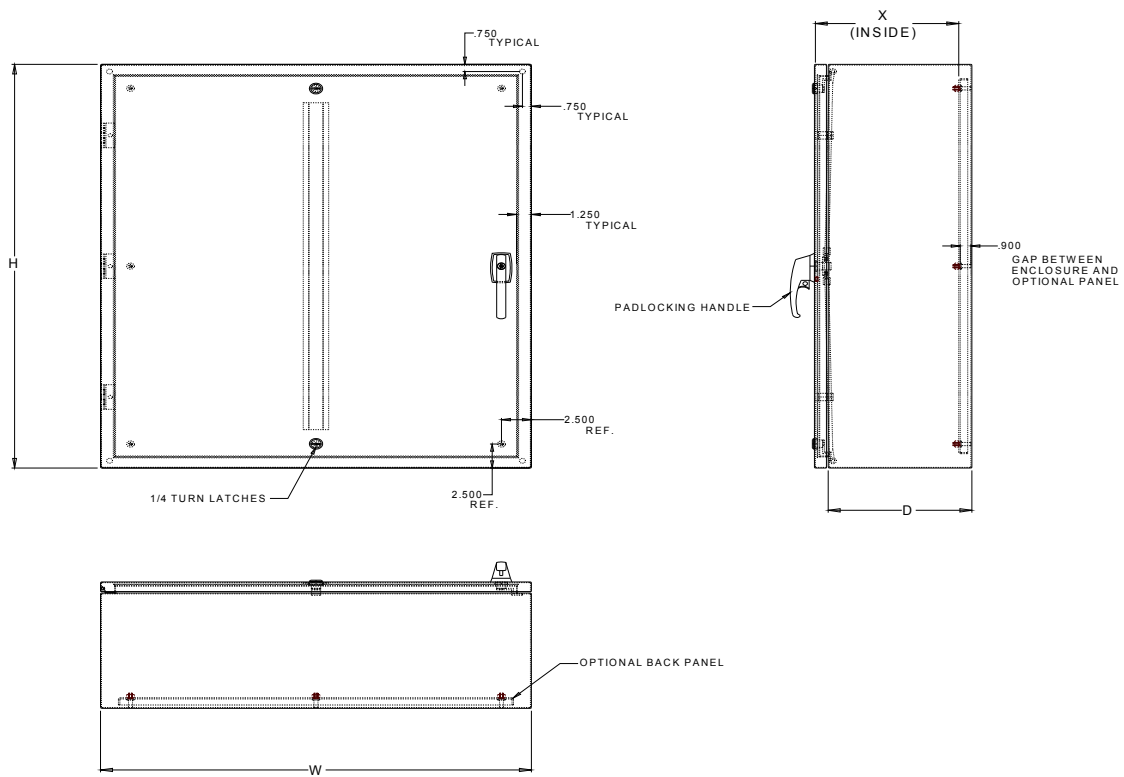
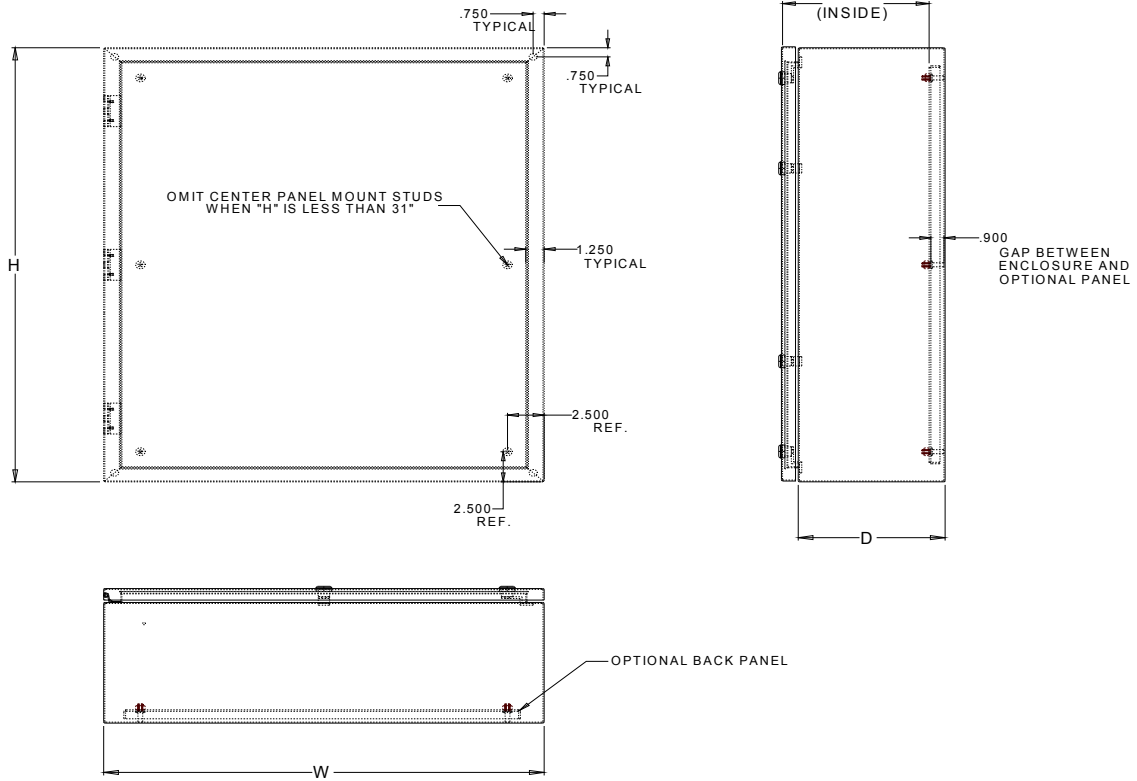


211 INDUSTRIAL COURT
WABASHA, MN 55981

Phone: (651) 565-3395
Fax: (651) 565-2787
E-mail: info@thomasindustriesinc.com
www.thomasindustriesinc.com

*DATA SUBJECT TO CHANGE WITHOUT NOTICE

TYPE 4 FLUSH DOOR ENCLOSURES



211 INDUSTRIAL COURT
WABASHA, MN 55981

Phone: (651) 565-3395
Fax: (651) 565-2787
E-mail: info@thomasindustriesinc.com
www.thomasindustriesinc.com

*DATA SUBJECT TO CHANGE WITHOUT NOTICE



**Remember Thomas
Industries for all of
your custom enclosure
needs!**



211 INDUSTRIAL COURT
WABASHA, MN 55981

*DATA SUBJECT TO CHANGE WITHOUT NOTICE

Phone: (651) 565-3395
Fax: (651) 565-2787
E-mail: info@thomasindustriesinc.com
www.thomasindustriesinc.com