

TYPE 4X JIC CONTINUOUS HINGE ENCLOSURES



Industry Standards
 UL 508A, Type 2, 3R, 4, 4X, 12, 13
 NEMA Type 2, 3R, 4, 4X, 12, 13



UL File E235575

TYPE 4X ENCLOSURES

Application:

Designed for use as instrument enclosures, electric, hydraulic or pneumatic control housings, electrical junction boxes or terminal wiring enclosures. Provides protection where equipment may be hosed down or exposed to other wet conditions.

Construction:

- Steel fabricated doors and enclosures.
- Smooth, continuously welded seams without knockouts, cutouts, or holes.
- Welded brackets provided for enclosure mounting.
- Doors secured with stainless steel continuous hinge and JIC style clamps.
- Doors sealed with closed cell, oil resistant gasket.
- Internal weld studs are provided for mounting optional inner panels.
- Grounding studs are provided.

Finish:

- ANSI 61 gray powder coating inside and out over zinc primed and phosphatized surfaces. Optional panels are powder coated white.

Accessories:

- Back Panels (see reference chart, pg. 6-1)

Options:

- Custom sizes and colors available. Please call for details.

Enclosure Catalog Number	Enclosure Size H x W x D	Body/Door Steel Gauge	X	Back Panel Catalog Number			Back Panel Size A x B	Back Panel Gauge
N4XJCH-080604	8.00" x 6.00" x 4.12"	16/16	3.62"	PP-0806	P2-0806	PS-0806	6.750" x 4.875"	14
N4XJCH-100804	10.00" x 8.00" x 4.12"	16/16	3.62"	PP-1008	P2-1008	PS-1008	8.750" x 6.875"	14
N4XJCH-121006	12.00" x 10.00" x 6.12"	16/16	5.62"	PP-1210	P2-1210	PS-1210	10.750" x 8.875"	14
N4XJCH-141206	14.00" x 12.00" x 6.12"	16/16	5.62"	PP-1412	P2-1412	PS-1412	12.750" x 10.875"	14
N4XJCH-141208	14.00" x 12.00" x 8.12"	16/16	7.62"	PP-1412	P2-1412	PS-1412	12.750" x 10.875"	14
N4XJCH-161406	16.00" x 14.00" x 6.12"	14/14	5.62"	PP-1614	P2-1614	PS-1614	14.750" x 12.875"	14
N4XJCH-161408	16.00" x 14.00" x 8.12"	14/14	7.62"	PP-1614	P2-1614	PS-1614	14.750" x 12.875"	14

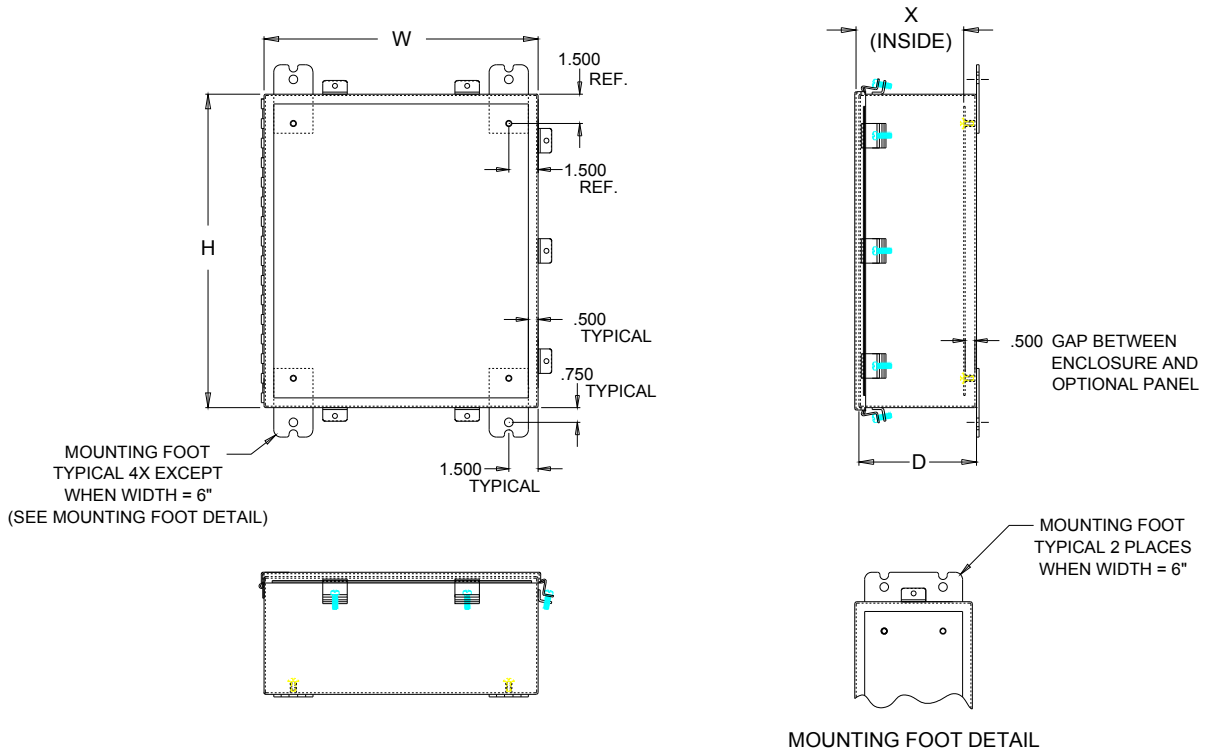


211 INDUSTRIAL COURT
 WABASHA, MN 55981

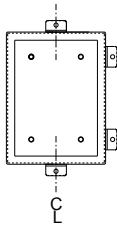
Phone: (651) 565-3395
 Fax: (651) 565-2787
 E-mail: info@thomasindustriesinc.com
www.thomasindustriesinc.com

*DATA SUBJECT TO CHANGE WITHOUT NOTICE

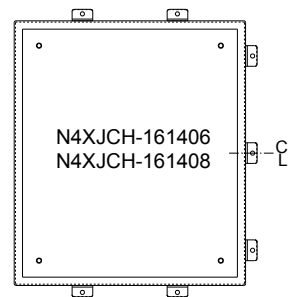
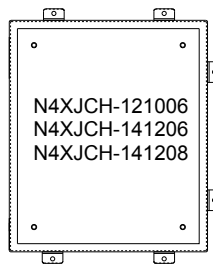
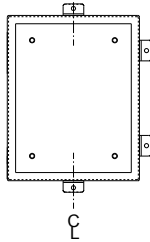
TYPE 4X JIC CONTINUOUS HINGE ENCLOSURES



N4XJCH-080604



N4XJCH-100804



211 INDUSTRIAL COURT
WABASHA, MN 55981

Phone: (651) 565-3395
Fax: (651) 565-2787
E-mail: info@thomasindustriesinc.com
www.thomasindustriesinc.com

*DATA SUBJECT TO CHANGE WITHOUT NOTICE