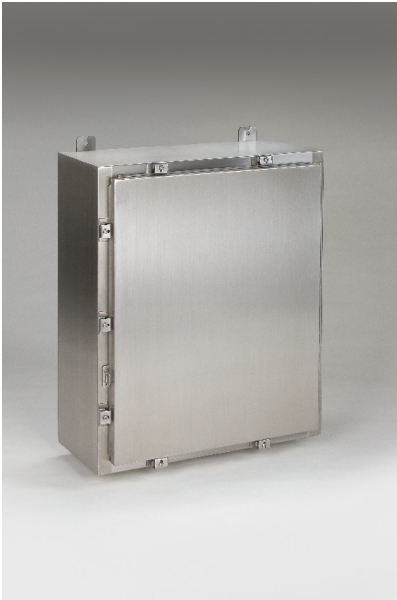


# TYPE 4X STAINLESS STEEL NEMA CLAMP ENCLOSURES



### Industry Standards

UL 508A, Type 2, 3R, 4, 4X, 12, 13

NEMA Type 2, 3R, 4, 4X, 12, 13



UL File E235575

TYPE 4X ENCLOSURES

### Application:

Designed to enclose electrical, electronic controls, instruments and components and protect against harsh industrial environments. Provides protection where equipment may be hosed down or located in highly corrosive environments.

### Construction:

- Formed 304 stainless steel.
- Smooth, continuously welded seams without knockouts, cutouts, or holes.
- Formed lip on enclosure to keep out liquids and contaminants.
- Stainless steel continuous hinge and pin.
- Continuous hinge door is removable by pulling the pin.
- Door is secured with stainless steel clamps.
- Provisions for padlocking.
- Print pocket provided.
- Door is sealed with closed cell, oil resistant gasket.
- Collar studs are provided for mounting optional inner panels.
- Grounding studs are provided.

### Finish:

- Cover and enclosure are stainless steel with smooth brushed finish.

### Accessories:

- Back panels (see reference chart pg. 6-3)

### Options:

- Custom sizes available. Please call for details.

Enclosure Catalog Number	Enclosure Size H x W x D	X	Back Panel Catalog Number	Back Panel Size A x B
N4XN-181606SS	18.00" x 16.00" x 6.00"	6.070"	PSN-1816	15.00" x 13.00"
N4XN-202008SS	20.00" x 20.00" x 8.00"	8.070"	PSN-2020	17.00" x 17.00"
N4XN-242006SS	24.00" x 20.00" x 6.00"	6.070"	PSN-2420	21.00" x 17.00"
N4XN-242008SS	24.00" x 20.00" x 8.00"	8.070"	PSN-2420	21.00" x 17.00"
N4XN-242406SS	24.00" x 24.00" x 6.00"	6.070"	PSN-2424	21.00" x 21.00"
N4XN-242408SS	24.00" x 24.00" x 8.00"	8.070"	PSN-2424	21.00" x 21.00"
N4XN-302410SS	30.00" x 24.00" x 10.00"	10.070"	PSN-3024	27.00" x 21.00"
N4XN-362406SS	36.00" x 24.00" x 6.00"	6.070"	PSN-3624	33.00" x 21.00"
N4XN-362408SS	36.00" x 24.00" x 8.00"	8.070"	PSN-3624	33.00" x 21.00"
N4XN-363010SS	36.00" x 30.00" x 10.00"	10.070"	PSN-3630	33.00" x 27.00"
N4XN-423610SS	42.00" x 36.00" x 10.00"	10.070"	PSN-4236	39.00" x 33.00"
N4XN-483610SS	48.00" x 36.00" x 10.00"	10.070"	PSN-4836	45.00" x 33.00"



211 INDUSTRIAL COURT  
WABASHA, MN 55981

\*DATA SUBJECT TO CHANGE WITHOUT NOTICE

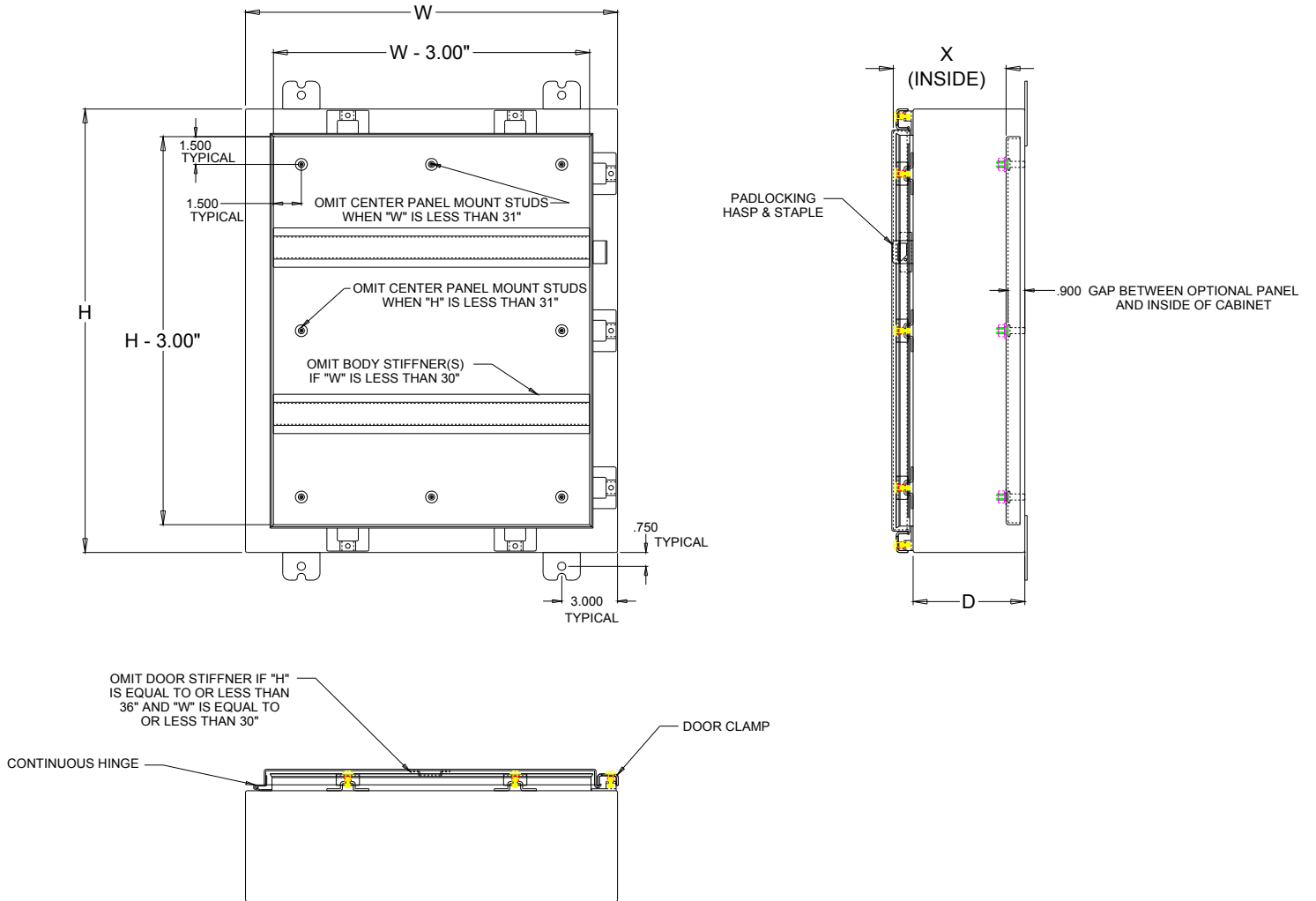
Phone: (651) 565-3395

Fax: (651) 565-2787

E-mail: [info@thomasindustriesinc.com](mailto:info@thomasindustriesinc.com)

[www.thomasindustriesinc.com](http://www.thomasindustriesinc.com)

# TYPE 4X STAINLESS STEEL NEMA CLAMP ENCLOSURES



211 INDUSTRIAL COURT  
WABASHA, MN 55981

Phone: (651) 565-3395  
 Fax: (651) 565-2787  
 E-mail: [info@thomasindustriesinc.com](mailto:info@thomasindustriesinc.com)  
[www.thomasindustriesinc.com](http://www.thomasindustriesinc.com)

\*DATA SUBJECT TO CHANGE WITHOUT NOTICE